

LMCC

ACGI Rentals Deck 2025



LMCC

Activations & Venue Rentals

The Arts Center at Governors Island is the first permanent home for arts and culture on Governors Island and serves as the gateway to Governors Island's Historic District. It embodies the Lower Manhattan Cultural Council's mission to serve and connect artists and communities.

Housed in a beautiful 19th-century former munitions warehouse, The Arts Center is an incubator for artists and a gathering space to engage the local community through creative programming that connects diverse audiences to arts and culture. It is a truly unique space in New York City.





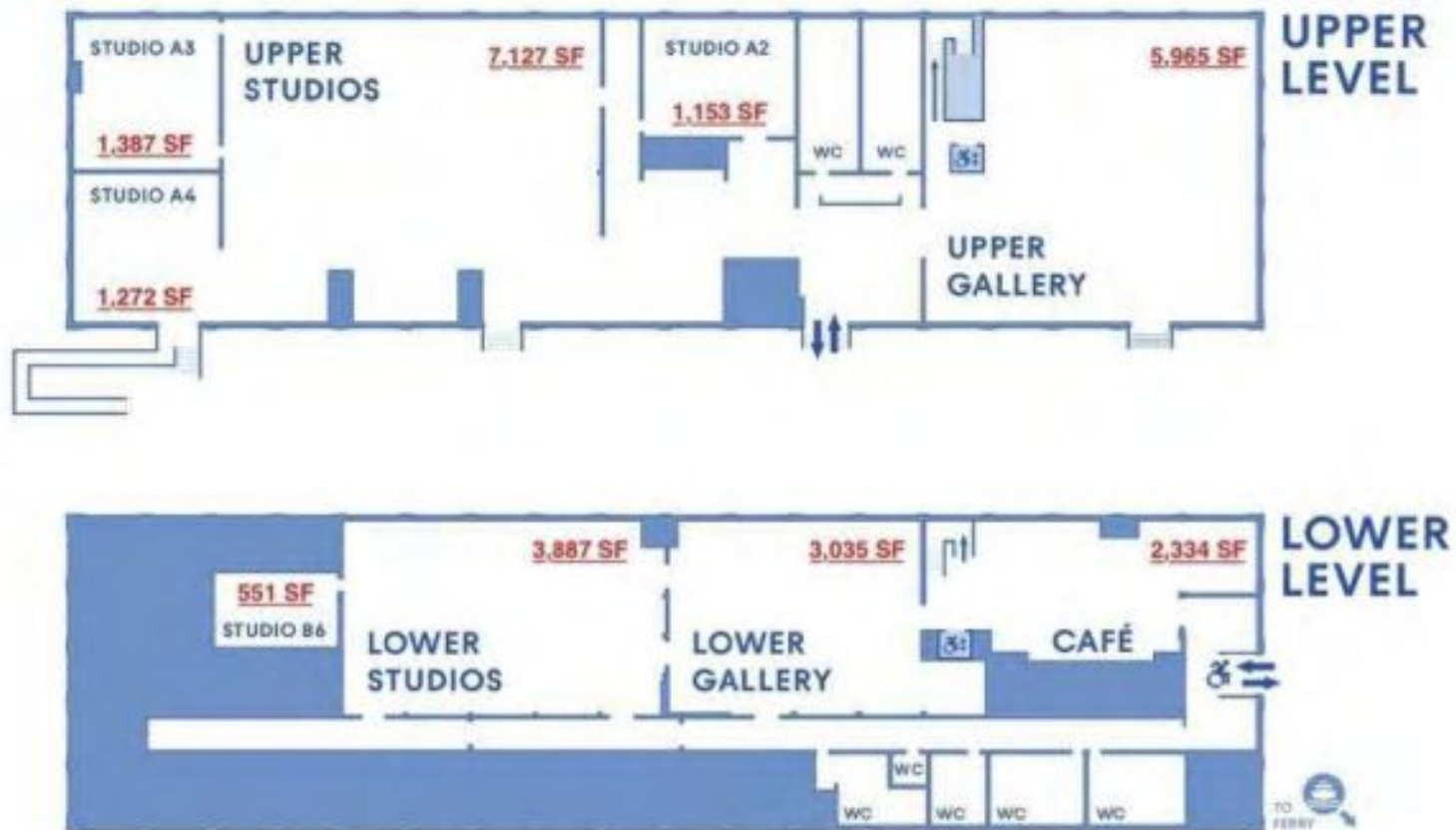


Governors Island

The Arts Center at Governors Island



Building Dimensions



The background image shows the interior of a modern café. In the foreground, there is a round wooden table with a thick top and a central pedestal base, surrounded by several black chairs with light-colored seats. The floor is made of large, light-colored tiles. In the background, there are large windows that look out onto a city skyline, and a brick wall is visible on the left. The ceiling has exposed wooden beams and some industrial-style lighting fixtures.

LMCC

Event Spaces-CAFÉ

With beautiful views of the Manhattan skyline, the Café is the main entry to The Arts Center's two galleries and lends itself for lunch or cocktail events as well as team retreats and meetings. It includes a separate kitchen prep area as well as a bar.

Starting capacity:	112 standing
Dimensions:	82'10" x 34'5"
Square footage:	2,334 sq ft



Café at The Arts Center at Governors Island

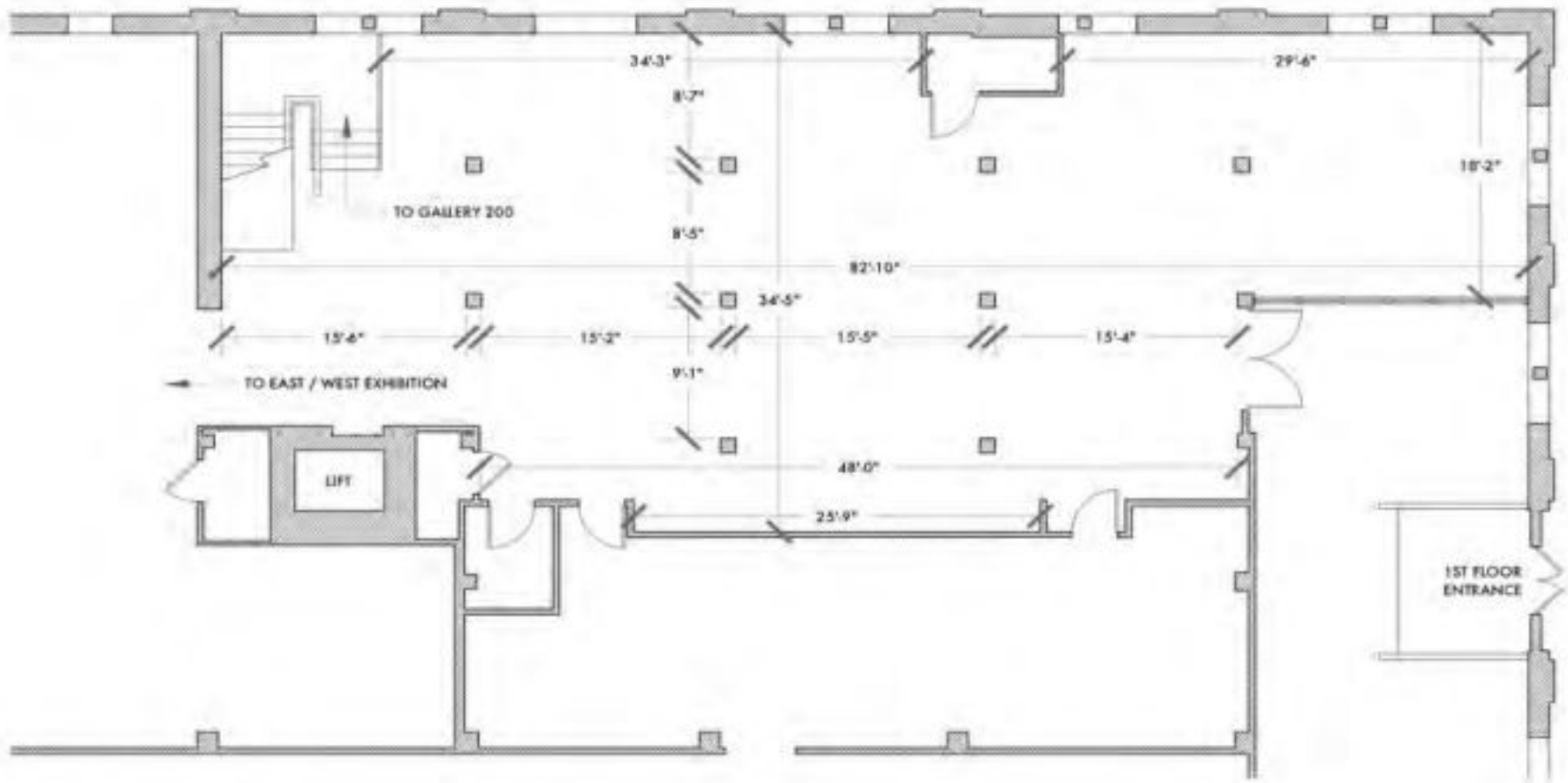


Café at The Arts Center at Governors Island



Rhonda Weppler and Trevor Mahovsky
there is nothing you can think that is not the moon | *The Museum of Lost Things*
The Café at The Arts Center at Governors Island

Café Floor Plan





LMCC

Event Spaces-LOWER GALLERY

With views of the Manhattan skyline, the Lower Gallery is a raw, industrial space featuring original beams and other details from the building's past as a munitions warehouse. It is accessed through the Café and perfect for film-and photo shoots, presentations, speaker events, and performances.

Starting capacity: 111 standing

Dimensions: 80'1" x 48'6"

Square footage: 3,035 sq ft

***The Lower Gallery can only be rented in combination with the Café**



Onyedika
Chuke
THE FOREVER
MUSEUM
ARCHIVE
CIRCA
6000BCE
June 12 - October

Onyedika Chuke
The Forever Museum Archive_Circa 6000BCE
Lower Gallery at The Arts Center at Governors Island



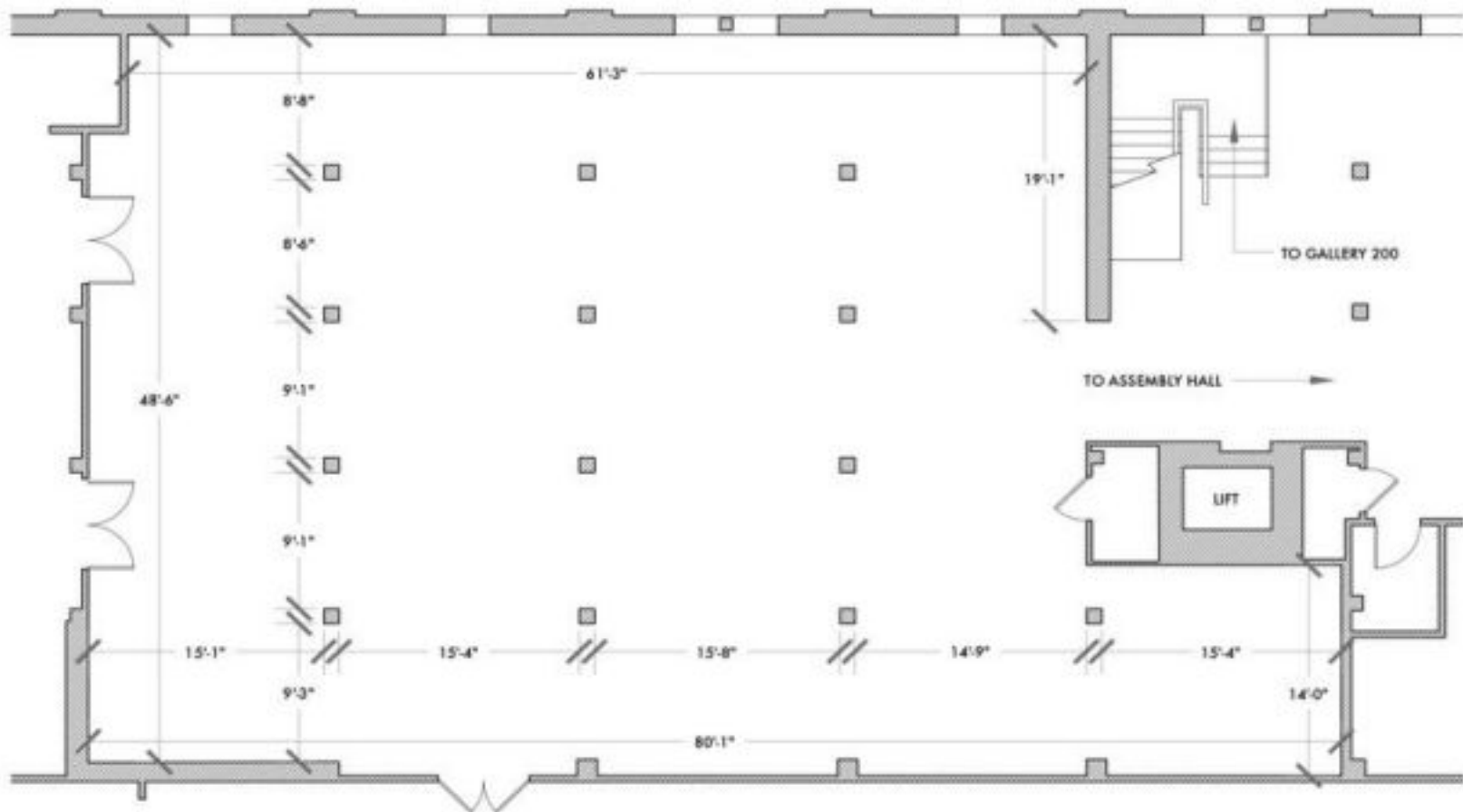
Michael Wang
Extinct in New York
Lower Gallery at The Arts Center at Governors Island



Allies in Arts
ANTI•VENOM

Lower Gallery at The Arts Center at Governors Island

Lower Gallery Floor Plan



LMCC

Event Spaces-UPPER GALLERY

A light-filled, airy, versatile space with soaring ceiling heights and spectacular views of the Manhattan skyline, accessible through its own foyer/entrance from the street (the building's upper level) or through the Café (on the building's lower level) via an open staircase or the elevator, it is the only large indoor space on the island.

Starting capacity: 200 standing

Dimensions: 82'9" x 75'8"

Ceiling height: 22'5" to ceiling

Square footage: 5,965 sq ft

Amy Khoshbin and Jennifer Khoshbin
Sun Seekers

Upper Gallery at The Arts Center at Governors Island

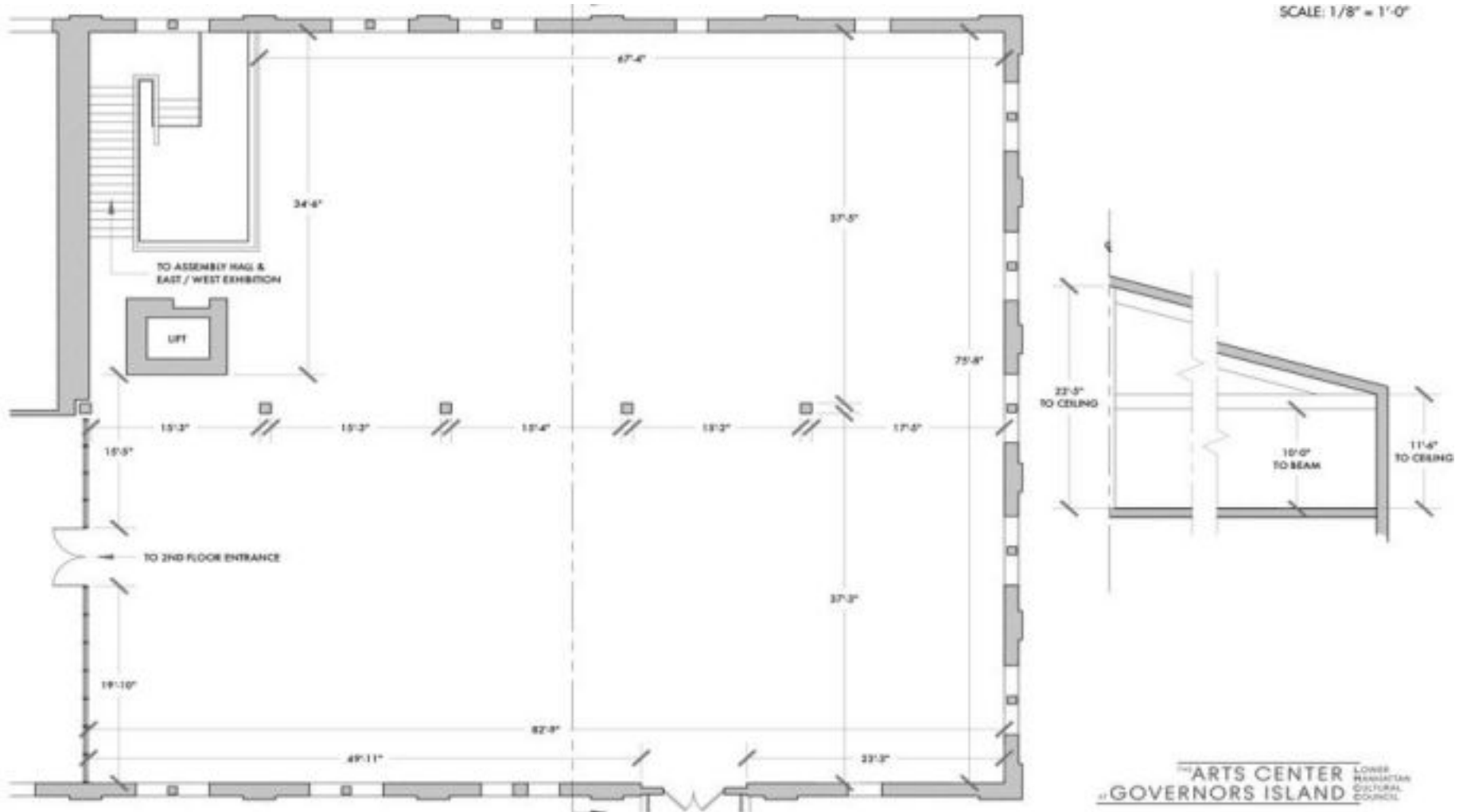


Daniel Shieh with Chia-Lun Chang and Arleene Correa Valencia
Where Time Runs Backwards
Upper Gallery at The Arts Center at Governors Island



Upper Gallery at The Arts Center at Governors Island

Upper Gallery Floor Plan



The background of the slide is a photograph of a large, empty studio space. The room has a polished, reflective floor that shows the overhead lights and windows. The walls are white, and there are several large windows on the left side, letting in natural light. The ceiling is white with exposed pipes and fluorescent light fixtures. The overall atmosphere is bright and professional.

LMCC

Meeting Spaces-STUDIOS

Three light-filled studios with views on Manhattan and lush green parkland are available for photo shoots, meetings and retreats.

Starting capacity: Studio A2 58 standing/32 seated

Studio A3 69 standing/39 seated

Studio A4 69 standing/39 seated

Square Footage: Studio A2 1,153sft

Studio A3 1,387sft

Studio A4 1,272sft



Studio A2 at The Art Center at Governors Island



Studio A3 at The Art Center at Governors Island



Studio A4 at The Art Center at Governors Island

LMCC Commercial Day Rates

<u>SPACE</u>	<u>OFF SEASON (Nov. 1 - Mar. 31)</u>		<u>IN SEASON (Apr. 1 - Oct. 31)</u>	
	Mon - Thurs	Fri. - Sun.	Mon - Thurs	Fri. - Sun.
Cafe	\$1,700.00	\$2,000.00	\$2,400.00	\$2,880.00
Cafe + Lower Gallery	\$3,500.00	\$4,200.00	\$5,040.00	\$6,048.00
Upper Gallery	\$5,000.00	\$6,000.00	\$7,200.00	\$8,640.00
Multimedia Room (A4)	\$1,500.00	\$1,700.00	\$1,900.00	\$2,200.00

Important Information on Day Rates-

- All rates are for space only and do not include variable costs (such as labor, private ferry service, etc) or administrative fees. All rates are subject to change.
- Day Rates are for 10 hours from 8am to 6pm. Alternative hours are available on a case by case basis. Hours past 10 hrs per day is subject to additional charges.
- Rental fees include: On-site venue events coordinator, WiFi and electricity, up to 5 folding tables and 30 chairs.
- Non-Profit and other community discounts available upon request. Email our Operations Manager, Kelsi Ford, at rentals@lmcc.net to inquire.

Studio A2 at The Art Center at Governors Island

LMCC Studio Hourly Rates

<u>SPACE</u>	REHEARSALS	CLASSES	PHOTO & FILM SHOOTS	EVENTS & OPEN REHEARSALS
	<i>Dance or theatrical rehearsals with non-paid participants and no public element.</i>	<i>Workshops or Classes with paid participation</i>	<i>For photoshoots or film work.</i>	<i>For events with public components including open rehearsals, workshop readings, etc.</i>
Multimedia Room (A4)	\$125.00	\$130.00	\$140.00	\$150.00
Studios (A2 & A3)	\$50.00	\$60.00	\$65.00	\$70.00
<i>Additional Notes:</i>	<i>For rehearsal only, no additional guests or public showings.</i>	<i>Additional labor fee of \$27/hr (4hr min) required for this use.</i>	<i>Additional labor fee of \$27/hr (4hr min) required for this use.</i>	<i>Additional labor fee of \$27/hr (4hr min) required for this use. Additional labor costs may be required after the event is evaluated.</i>

Important Information on Hourly Rates

- All rates are for space only and do not include variable costs (such as labor, private ferry service, etc) or administrative fees. All rates are subject to change.
- Hourly Studio rentals are available from 8am to 6pm. Alternative hours are available on a case by case basis.
- Rental fees include: WiFi and electricity, up to 5 folding tables and 30 chairs, basic speaker system for audio playback
- Non-Profit and other community discounts available upon request. Working artists are encouraged to reach out about our NYSCA Subsidized Space Program for the rehearsal studios. Email our Operations Manager, Kelsi Ford, at rentals@lmcc.net to inquire.

LMCC FAQ

- The Arts Center at Governors Island is a short, 8-minute ferry ride from the Battery Maritime Building at 10 South Street in Lower Manhattan.
- It is located right off the ferry landing to/from Manhattan (Soissons Landing).
- Regular passenger ferry service is available throughout the day and evening at no additional charge for event staff; private ferry service is available for a fee.
- The rental fee includes access to the island and to a clean space, electricity, WiFi, janitorial, and on-site LMCC events coordinator.
- Load-in is on the day of the event, load-out the next morning.
- A/V equipment is available for rent.
- A liquor permit is required, as is a TPA (Temporary Place of Assembly) if the number of guests exceeds occupancy limits.
- A list of preferred vendors is available upon request.
- Outdoor activities (guided tour of the island, scavenger hunt etc.) can be organized with island partners pending availability.

Daniel Shieh with Chia-Lun Chang and Arleene Correa Valencia
Where Time Runs Backwards
Upper Gallery at The Arts Center at Governors Island

LMCC

For more information,
please contact:

Kelsi Ford

Operations Manager
kford@lmcc.net

Learn more at LMCC.net

