



THE ARTS CENTER
AT GOVERNORS ISLAND

LOWER
MANHATTAN
CULTURAL
COUNCIL

The Arts Center at Governors Island is the first permanent home for arts and culture on Governors Island and serves as the gateway to Governors Island's Historic District. It embodies the Lower Manhattan Cultural Council's mission to serve and connect artists and communities.

Housed in a beautiful 19th-century former munitions warehouse, The Arts Center is an incubator for artists and a gathering space to engage the local community through creative programming that connects diverse audiences to arts and culture. It is a truly unique space in New York City.

Activations & Venue Rentals







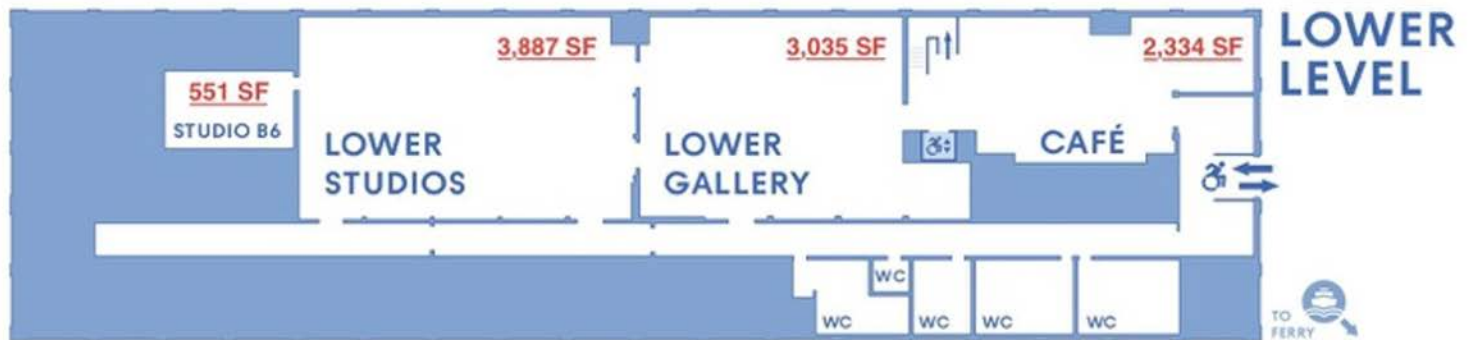
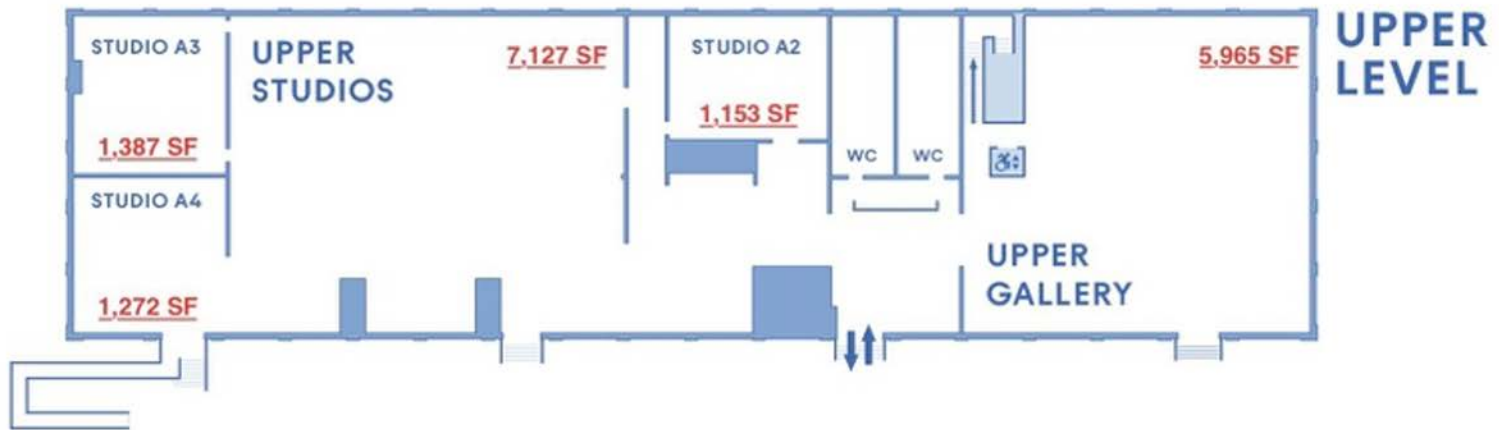


LMCC's Arts Center



The Arts Center is located at Soissons Landing, the ferry terminal to/from Manhattan

Governors Island



Building Dimensions

CAFÉ

With beautiful views of the Manhattan skyline, the Café is the main entry to The Arts Center's two galleries and lends itself for lunch or cocktail events. It includes a separate kitchen prep area as well as a bar.

Starting capacity: 112 standing

Dimensions: 82'10" x 34'5"

Square footage: 2,334 sq ft

Event Spaces



HOT COFFEE	4.00
AMERICANO	4.00
ESPRESSO	3.75
MACCHIATO	4.25
CORTADO	4.50
CAPPUCCINO	5.25
LATTE	5.25
MOCHA	6.00
CAFE AU LAIT	4.00
MATCHA LATTE	6.25
CHAI LATTE	5.25
TUMERIC LATTE	5.75
HOT TEA	4.00

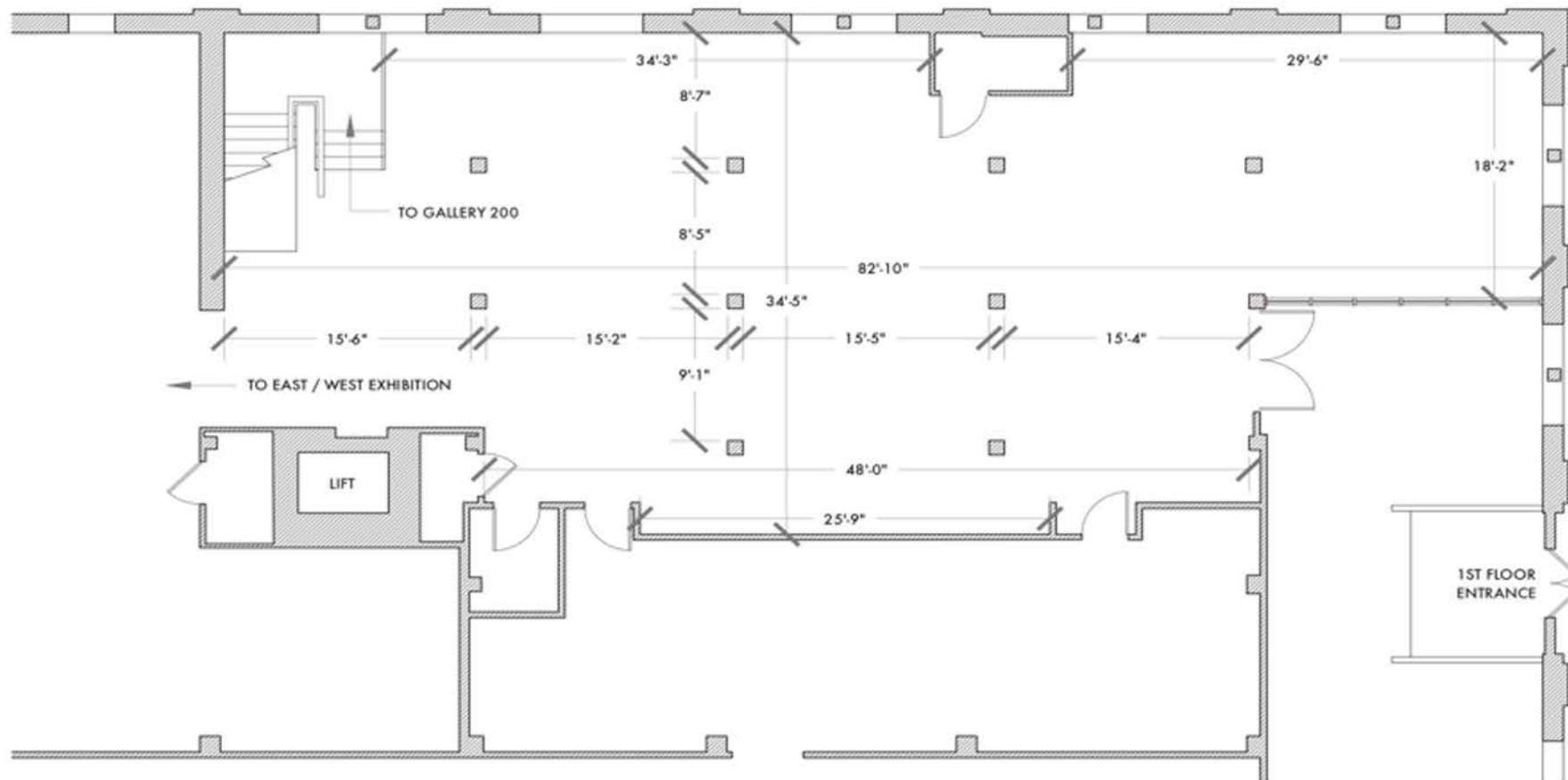
ICED COFFEE	5.00
AMERICANO	5.00
LATTE	6.25
MOCHA	6.50
MATCHA LATTE	6.75
CHAI LATTE	6.50
TUMERIC LATTE	6.75
TEA	5.00
NITRO	6.00



NO ESPRESSO
*Currently only
Latte, Mocha and
Hot Tea Latte
*No Nitro
*No Cold Brew







Café Floor Plan

LOWER GALLERY*

With views of the Manhattan skyline, the Lower Gallery is a raw, industrial space featuring original beams and other details from the building's past as a munitions warehouse. It is accessed through the Café and perfect for film- and photo shoots, presentations, speaker events, and performances.

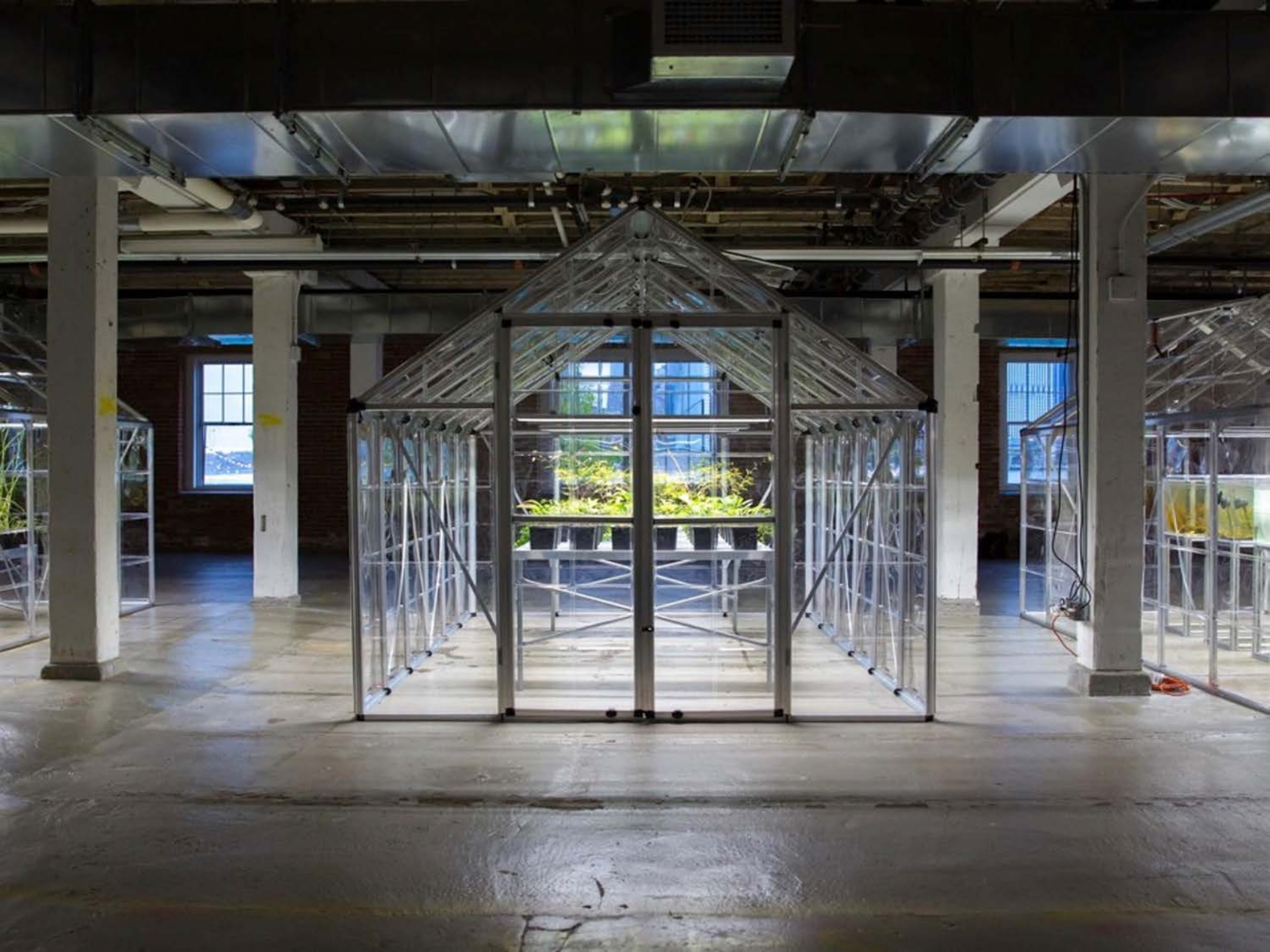
Starting capacity: 111 standing

Dimensions: 80'1" x 48'6"

Square footage: 3,035 sq ft

***The Lower Gallery can only be rented in combination with the Café**

Event Spaces

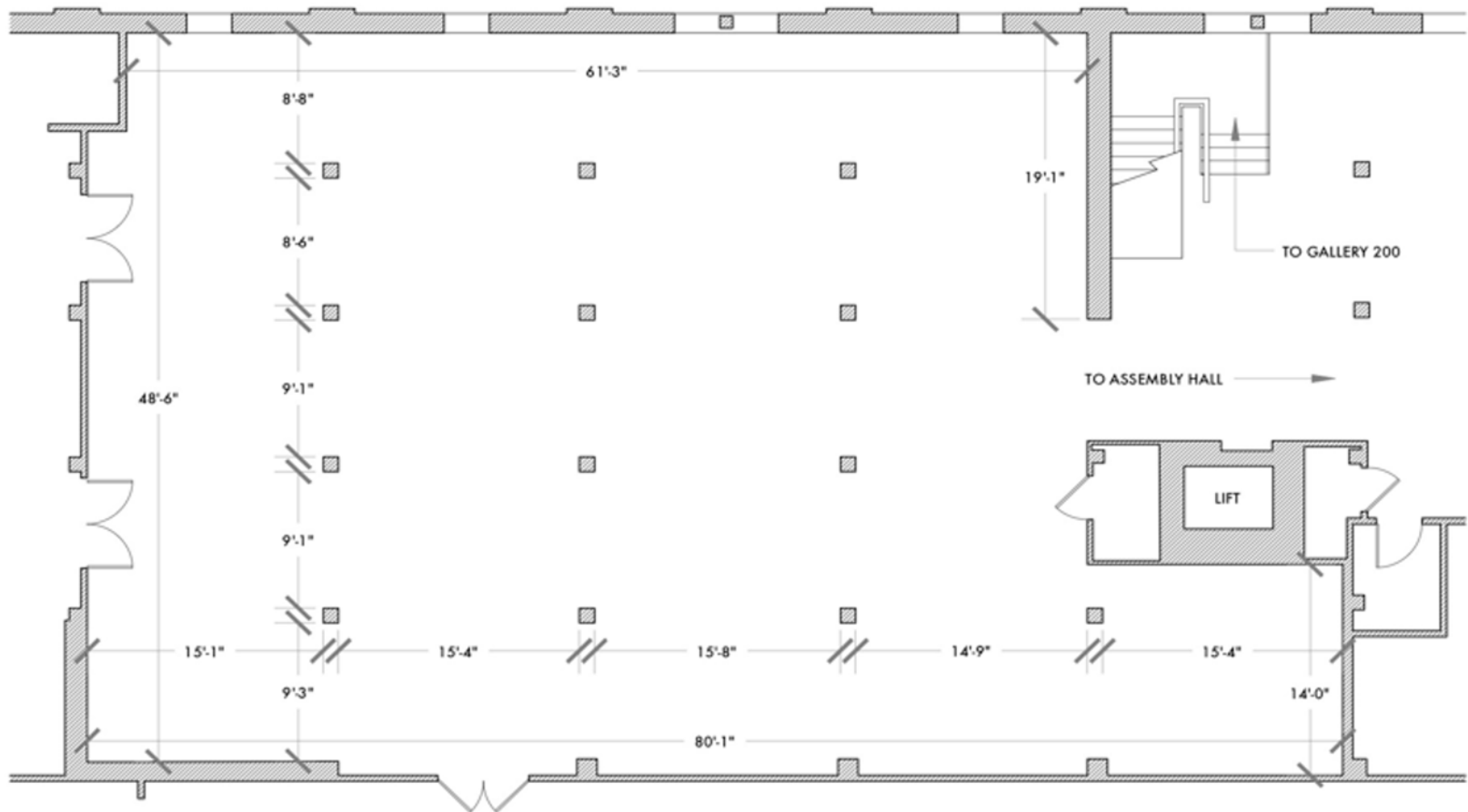


Onyedika
Chiyke
THE FOREVER
MUSEUM
ARCHIVE
CIRCA
6000BCE

June 10 - October 10

101





Lower Gallery Floor Plan

UPPER GALLERY

A light-filled, airy, versatile space with soaring ceiling heights and spectacular views of the Manhattan skyline, accessible through its own foyer/entrance from the street (the building's upper level) or through the Café (on the building's lower level) via an open staircase or the elevator, it is the only large indoor space on the island.

Starting capacity: 200 standing

Dimensions: 82'9" x 75'8"

Ceiling height: 22'5" to ceiling

Square footage: 5,965 sq ft

Event Spaces



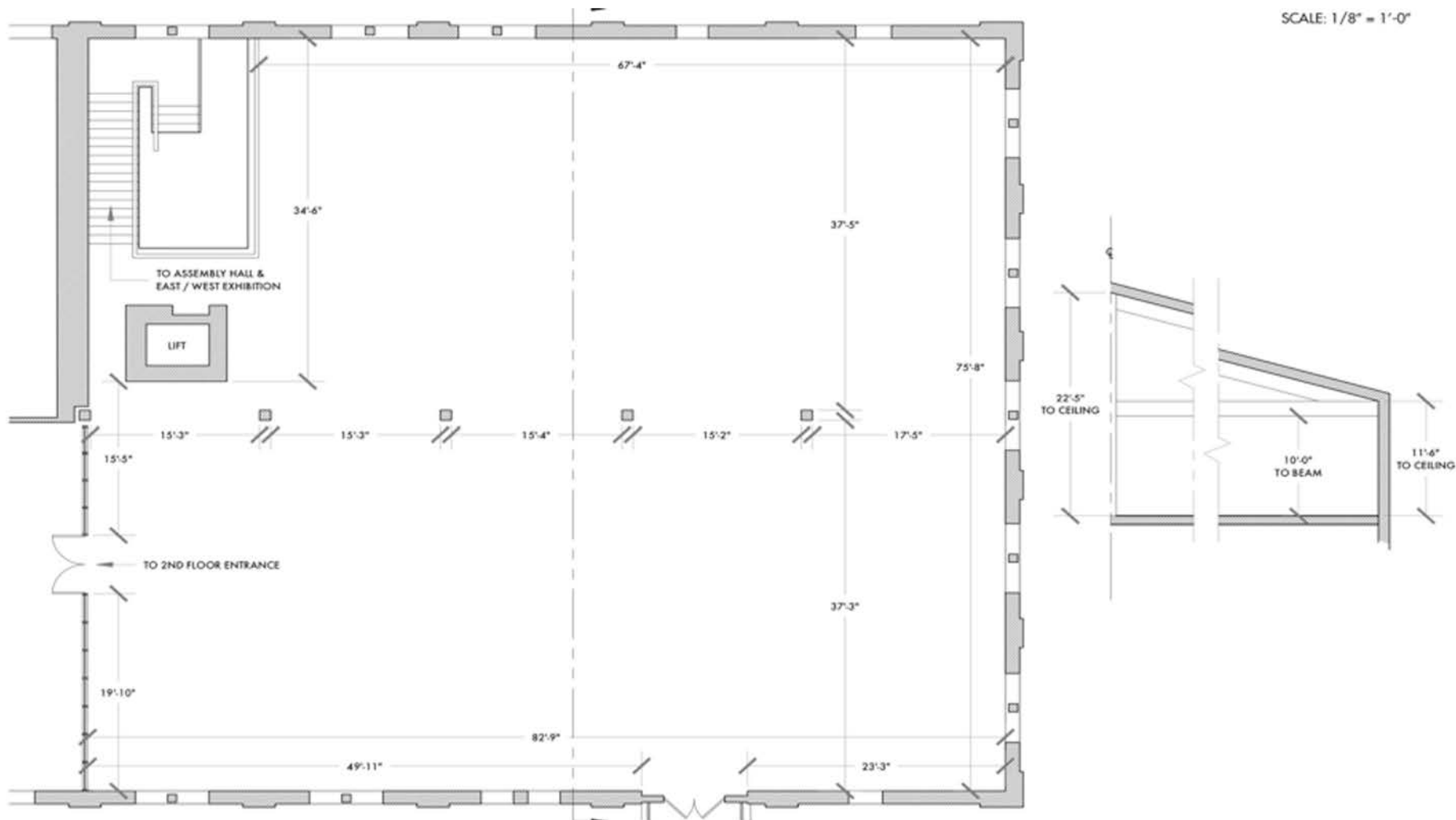








SCALE: 1/8" = 1'-0"



Upper Gallery Floor Plan

STUDIOS

Two light-filled studio spaces with views on Manhattan and New York Harbor are available for meetings and retreats.

Starting capacity:	Studio A2	58 standing/32 seated
	Studio A3	69 standing/39 seated

Square Footage:	Studio A2	1,153sft
	Studio A3	1,387sft

Meeting Spaces



LOCATION	SFT	STARTING CAPACITY	RATES**
Studio A2	1,153	58	\$2,000
Studio A3	1,387	69	\$2,500
Café	2,334	112	\$5,500
Café + Lower Gallery	5,369	223	\$12,500
Upper Gallery	5,965	200	\$14,000
Upper Gallery + Café	8,299	312	\$18,000
Entire Space (Upper + Lower Galleries + Café)	11,334	423	\$24,000

***Rates are subject to change.**

****Rates do not include a 15% admin fee, extra service fees and variable costs.**

Rate Card*

- The Arts Center at Governors Island is a short, 8-minute ferry ride from the Battery Maritime Building at 10 South Street in Lower Manhattan.
- It is located right off the ferry landing to/from Manhattan (Soissons Landing).
- Regular passenger ferry service is available throughout the day at no additional charge; private ferry service is available for a fee.
- The rental fee includes access to the island and to a clean space, electricity, WiFi, janitorial, and on-site LMCC events coordinator.
- Load-in is on the day of the event, load-out the next morning.
- A/V equipment is available for rent.
- A liquor permit is required, as is a TPA (Temporary Place of Assembly) if the number of guests exceeds occupancy limits.
- A list of preferred vendors is available upon request.
- Outdoor activities (guided tour of the island, scavenger hunt etc.) can be organized for an additional fee.

DEPARTS MANHATTAN	DEPARTS GOVERNORS ISLAND
<i>{7:00 am}</i>	<i>{7:15 am}</i>
<i>{7:30 am}</i>	<i>{7:45 am}</i>
<i>{8:00 am}</i>	<i>{8:15 am}</i>
<i>{8:30 am}</i>	<i>{8:45 am}</i>
<i>{9:00 am}</i>	<i>{9:15 am}</i>
<i>{9:30 am}</i>	<i>{9:40 am}</i>
10:00 am	10:20 am
10:40 am	11:00 am
11:20 am	11:40 am
12:00 pm	12:20 pm
12:40 pm	1:00 pm
1:20 pm	1:40 pm
2:00 pm	2:20 pm
2:40 pm	3:00 pm
3:20 pm	3:40 pm
4:00 pm	4:20 pm
4:40 pm*	5:00 pm
<i>{5:20 pm}</i>	5:40 pm
<i>{6:00 pm}</i>	6:15 pm

**2021 SUMMER PUBLIC ACCESS SEASON JULY 2 – SEPTEMBER 4
SUBJECT TO CHANGE**

SUNDAY-THURSDAY FERRY SCHEDULE

DEPARTS MANHATTAN	DEPARTS GI
{7:00 am}	{7:15 am}
{7:30 am}	{7:45 am}
{8:00 am}	{8:15 am}
{8:30 am}	{8:45 am}
{9:00 am}	{9:15 am}
{9:30 am}	{9:40 am}
10:00 am	10:20 am
10:40 am	11:00 am
11:20 am	11:40 am
12:00 pm	12:20 pm
12:40 pm	1:00 pm
1:20 pm	1:40 pm
2:00 pm	2:20 pm
2:40 pm	3:00 pm
3:20 pm	3:40 pm
4:00 pm	4:20 pm
4:40 pm	5:00 pm
5:20 pm	5:40 pm
6:00 pm	6:15 pm
6:40 pm	7:00 pm
7:20 pm	7:40 pm
8:00 pm	8:20 pm
8:40 pm*	9:00 pm
{9:20 pm}	10:00 pm

2021 SUMMER PUBLIC ACCESS SEASON
JULY 2 – SEPTEMBER 4 SUBJECT TO CHANGE

FRIDAY/SATURDAY FERRY SCHEDULE

For all inquiries, please contact:
Alice Bennahmias, Partnerships Liaison
alice@lmcc.net / (646) 867 4006
www.lmcc.net