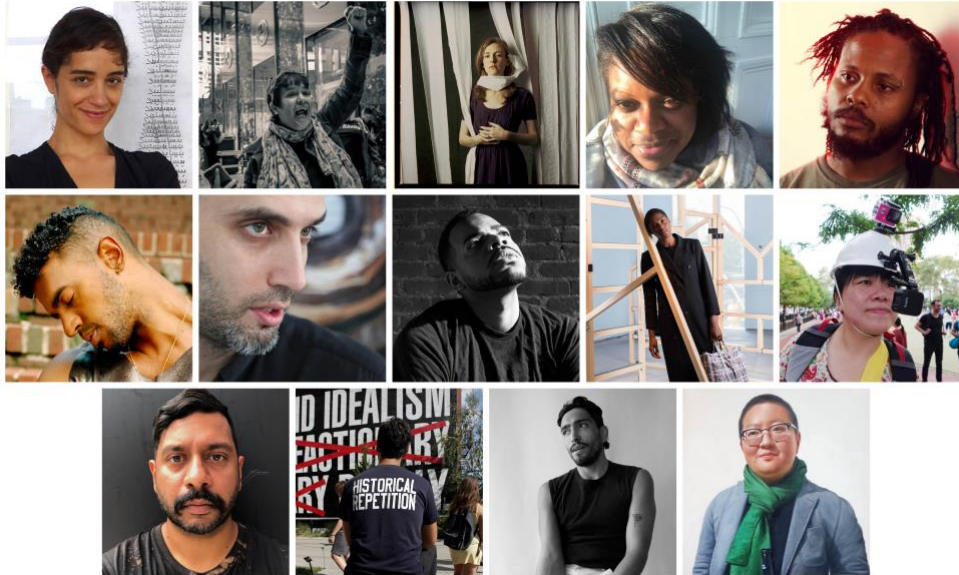


**LOWER MANHATTAN CULTURAL COUNCIL (LMCC)
AWARDS 2018–2019 WORKSPACE ARTIST RESIDENCIES
LITERARY, PERFORMING AND VISUAL ARTISTS TO RECEIVE NINE
MONTHS OF STUDIO SPACE, CAREER DEVELOPMENT SUPPORT
AND FUNDING IN DOWNTOWN MANHATTAN**



Photos courtesy of the artists

From top left: Golnar Adili, Jennifer Bartlett, Eliza Bent, Keisha Bush, André Daughtry, Jonathan González, Zac Hacmon, Terrance James Jr., NIC Kay, Ying Liu, Asif Mian, Kenneth Pietrobono, Orlando Tirado, and Zhiyuan Yang

Lower Manhattan Cultural Council (LMCC) is thrilled to announce the names of the artists participating in its competitive **Workspace** studio residency program now through **June 2019**. In direct response to the immediate needs of artists and the artistic community in New York City, LMCC offers a variety of artist residency programs in spaces throughout Manhattan and at Governors Island to artists working in all disciplines and at varying career stages. **Workspace** is a nine-month studio residency program for emerging visual artists, performing artists and writers focused on the creative process and the development of a community of peers and professionals in the field. Annually, a cohort of 15-30 artists gather and share their practices with each other and experience weekly talks and visits with renowned NYC curators, gallerists, art critics and other industry professionals.

2018–2019 Workspace Artists-in-Residence:

Visual Artists

[Golnar Adili](#)

[André Daughtry](#)

[Zac Hacmon](#)

[Terrance James](#)

[Asif Mian](#)

[Kenneth Pietrobono](#)

[Zhiyuan Yang](#)

Writers

[Jennifer Bartlett](#)

[Eliza Bent](#)

[Keisha Bush](#)

[Orlando Tirado Amador](#)

Performing Artists

[Jonathan González](#)

[Ying Liu](#)

[NIC Kay](#)

On-Site Assistant

Wojciech Gilewicz

Collectively, LMCC's 2018-2019 Workspace cohort is a diverse group of visionary artists from the United States and across the world, including Iran and China. Many have received other notable awards and residencies, such as NYFA fellowships, the Sergej Parajanov Award for Outstanding Poetic Vision, the Van Lier Movement Research Fellowship and the NARS International Residency, among many others. They have also exhibited their works in museums or festivals, such as the Museum of Modern Art or the Pingyao International Photography Festival.

The group is also made up of artists who are doing extraordinary things parallel to their artistic practice. **Jennifer Bartlett** is a poet and transportation activist who works regularly with New York City Transit Authority President Andy Byford to improve ADA access throughout the subway system. **André Daughtry**, in addition to being a filmmaker, is the Minister of Arts at Judson Church, a storied home for dance and performance in New York City. **Orlando Tirado**, a screenwriter in the program, wrote the screenplay for a film starring Charlotte Rampling that premiered at the Venice Film Festival several years ago, for which Ms. Rampling won "Best Actress."

On receiving his residency, 2018-19 Workspace resident and visual artist **Kenneth Pietrobono** says, "Being offered this experience with LMCC is a feeling of confirmation; encouragement to continue my work and a shared investment in my practice." He continues, "Having never attended a Masters program, the LMCC Workspace residency is a great way to do work and research within a community of artists I may not have encountered otherwise. The support and encouragement simply from being in a peer-based environment is transformative and something I plan to carry with me long after we turn in our keys. For now, I'm here to absorb, experience, connect and produce."

LMCC's Executive Director of Artist Programs, **Lili Chopra**, speaks on the residency saying, "LMCC provides Workspace residents the support and studio space to allow these emerging artists across all disciplines to experiment and develop their work. Workspace artists work in

relation with their surroundings, drawing inspiration from the stunning views above Lower Manhattan, while reinstating art and culture in the Financial District. After their residency, most artists continue to expand their projects after honing in their talent and developing a network within the Workspace community.”

Committed to ensuring Workspace reflects the diversity of practices and backgrounds of emerging artists working today, LMCC maintains an open call application process where anyone who self-identifies as an emerging artist may apply for free. This year, over 900 NYC-based and international applicants applied for 14 residency spots. Applicants are then considered through a rigorous selection process, including the convening of external juries where LMCC relies on the extensive knowledge and expertise of artistic colleagues and peers in the field as well as artist alumni of LMCC.

Working with real estate partners, LMCC adapts and activates temporarily vacant office space downtown to annually provide artists and arts groups with studio space in some of the city’s most noted landmarks. Currently, LMCC’s Workspace artists-in-residence are housed in studios in 11,234 square feet of prime Lower Manhattan real estate on the 15th floor of **101 GREENWICH** (including artist studios, meeting rooms, common areas and a dance floor/rehearsal space), generously donated by **Cove Property Group** and **Bentall Kennedy**. The building’s Beaux Arts architectural style features sweeping views, a terra cotta facade and relatively column-free, loft-like aesthetics.

LMCC’s Workspace is committed to being a space for experimentation and dialogue and encourages creative risk-taking, collaboration, learning and skill-sharing at a critical early stage of an artist’s career. By creating space for artistic production just blocks from Wall Street, the Workspace program changes what it means to “work” Downtown. Of her experience, Workspace alumna **Karina Skvirsky** (2003-2004 Resident) commented, “The LMCC residency I participated in was transformative. Our cohort was located in the Woolworth Building and we had a view of Ground Zero. It was a strange but moving time to be in Lower Manhattan. The most impactful aspect of the residency was I had time and a space to process the aftermath of 9/11—both emotionally and intellectually. My project internalized that experience. There is something about a project residency that can capture a place and cultural political moment.” Notable Workspace alumnae include **Simone Leigh** (’07-’08), **LaToya Ruber Frazier** (’09-10), **Lisa Ko** (’15-’16), **Heather Hart**, **Rashaad Newsome** (’08-’09), **Jacolby Satterwhite** (’13-’14), **Dread Scott** (’11-’12), **Chitra Ganesh** (’04-05) and **Jenny Zhang** (’12-’13, 2018 PEN Award winner.)

ABOUT LMCC

LMCC empowers artists by providing them with networks, resources, and support to create vibrant, sustainable communities in Manhattan and beyond.

In 2018, LMCC will provide studio residency programs, professional development skills, and networks for emerging and mid-career artists, and award over \$1.4 million dollars in grants to artists and arts organizations.

LMCC’s studio residency spaces are open to US and international artists, and its Manhattan Arts Grants are open to Manhattan-based artists and arts organizations.

Through public programs such as Open Studios and the River To River Festival, LMCC bridges the gap between audiences and the artistic process, engaging the public with different phases of

creation. LMCC artists-in-residence grow through its programs, showcasing intimate works-in-process, special commissions, as well as large-scale, finished presentations and premieres.

LMCC's programs are recognized throughout New York and internationally as catalysts for artists of all disciplines and career stages to build community and cultivate audiences. As it approaches its 50th year, LMCC continues to maintain a strong relationship with corporations, foundations, government agencies, as well as local cultural organizations in supporting the creative life of New York City.

www.LMCC.net

ABOUT COVE PROPERTY GROUP

Cove is a New York City-based owner, developer and operator of institutional-grade commercial real estate assets. Cove's team has a combined 50 years of expertise in direct property acquisition, development, ownership and asset management, which integrates seamlessly with an entrepreneurial, yet significant, equity partner to form a well-capitalized real estate operating platform with deep experience. The company prides itself on its ability to execute a true "cradle-to-grave" strategy with respect to real estate ownership and operation.

<http://www.covepg.com>

ABOUT BENTALL KENNEDY

Bentall Kennedy, a Sun Life Investment Management company, is one of the largest global real estate investment advisors and one of North America's foremost providers of real estate services. Bentall Kennedy serves the interests of more than 550 institutional clients with expertise in office, retail, industrial and multi-residential assets throughout Canada and the U.S. Bentall Kennedy's Investment Management group has approximately \$48 billion (CAD)/\$36 billion (USD) of assets under management (as of June 30, 2018). Bentall Kennedy is one of the largest real estate services providers in Canada, managing more than 60 million square feet on behalf of third-party and investment management clients (as of June 30, 2018). Bentall Kennedy is a member of UN PRI and a recognized Responsible Property Investing leader ranked among the top firms around the globe in the Global Real Estate Sustainability Benchmark (GRESB) for the seventh consecutive year since GRESB was launched.

Bentall Kennedy includes Bentall Kennedy (Canada) Limited Partnership, Bentall Kennedy (U.S.) Limited Partnership and the real estate and commercial mortgage investment groups of certain of their affiliates, all of which comprise a team of real estate professionals spanning multiple legal entities. The assets under management shown above include real estate equity and mortgage investments of the companies within Bentall Kennedy.

For more information, visit www.bentallkennedy.com.

FUNDING CREDITS

LMCC's Artist Residency Programs are supported, in part, by Cowles Charitable Trust, The Gladys Kriebel Delmas Foundation, Jacques and Natasha Gelman Trust, May and Samuel Rudin Family Foundation, Inc., Mertz Gilmore Foundation, and Milton & Sally Avery Arts Foundation.



LMCC's Artist Residency Programs are also supported, in part, by public funds from the New York City Department of Cultural Affairs in partnership with the City Council.

Workspace is also supported, in part, by the Jerome Foundation. Space for the 2018–2019 Workspace program was donated by Cove Property Group and Bentall Kennedy.

www.lmcc.net

Facebook: facebook.com/LMCCNYC

Twitter: @LMCC

Instagram: @LMCC_NYC

Press inquiries about LMCC: Chris Schimpf, Alisa Price, Krista Williams or Carla Sacks at Sacks & Co., 212.741.1000, chris.schimpf@sacksco.com, alisa.price@sacksco.com, krista@sacksco.com or carla@sacksco.com.