



FOUNDING AND TITLE SPONSOR
AMERICAN EXPRESS

June 17–July 15

all around Lower Manhattan
2012 Season Festival Guide
RiverToRiverNYC.com
Free to All

River To River® Festival

With support from many public and private partners since 2002, River To River Festival has become an essential component of Lower Manhattan's vital and vibrant cultural life.

Each summer, the Festival activates more than 25 indoor and outdoor locations in the neighborhood with an unparalleled collection of music, dance, theater, visual art, film, and participatory experiences by renowned and breakout artists from New York City and beyond. For more than 100,000 attendees from around the region and overseas, River To River Festival provides an intense and rewarding way to experience Lower Manhattan's waterfronts, parks, plazas, and other hidden treasures. The Festival's densely packed schedule of daytime, evening, and weekend events showcases Lower Manhattan as a thriving center for cultural activity and a key destination point for experiencing New York City's wealth and diversity of heritage, history, dining, shopping, and art.

Together River To River Festival partners are working to foster conversations about artistic, community, and environmental concerns associated with urban/waterfront landscapes in redevelopment, growth, and transformation. By showcasing New York City, and in particular Lower Manhattan, as creative, green, and global, with shows and events that speak to the diverse cultures and tastes from across the region, River To River Festival offers a singular artistic experience for audiences of all ages and backgrounds – and every event is free!

The 2012 River To River Festival will take place between June 17 and July 15.

Dear Festivalgoers,

Lower Manhattan is a neighborhood that encourages exploration—off New York City's geometric grid, its iconic architecture, winding streets, and waterfront pleasures provide unexpected rewards for our residents, workers, and visitors.

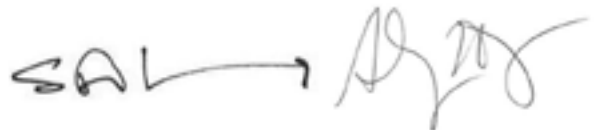
Lower Manhattan Cultural Council (LMCC), as the lead partner for the River To River Festival since 2011, is privileged to work with our partners Arts Brookfield, Battery Park City Authority, and The Seaport to create a cultural celebration that resonates with Lower Manhattan's particular topography. The Festival's program has its own icons, histories, and surprises.

River To River Festival is made possible by our sponsors. We express our deepest thanks to our Founding and Title Sponsor American Express, as well as the Alliance for Downtown New York, The Port Authority of New York and New Jersey, The Lower Manhattan Development Corporation, HUD, and other underwriters. Because of their support, all events are free and open to the public.

The Festival encourages engagement with the unfamiliar journeys from dance on the water to music in the Chapel, master artists at Rockefeller Park to movies on the Elevated Acre. And all this interwoven with culinary delights, natural beauty, and social encounters.

Take a chance. Take a day. Make your own path.

Enjoy the Festival!



Sam Miller
LMCC President

Andrew Horwitz
Director of Public Programs

founding and title sponsor



leadership support



THE PORT AUTHORITY
OF NY & NJ



lead media partners



friends of the festival



Culture Ireland
Cultúr Éireann



Additional support for certain projects in the River To River Festival has been provided by: ARTonAIR.org, Asian Cultural Council, The Clocktower Gallery & Radio, Conseil des arts et des lettres du Québec, Doris Duke Foundation for Islamic Art, Eyebeam Center for Art and Technology, Harpo Foundation, Jerome Foundation, Mertz Gilmore Foundation, Metropolitan Waterfront Alliance, New England Foundation for the Arts, New York City Percent for Art Fund, New York Foundation for the Arts, Robert Sterling Clark Foundation, Rockefeller Foundation, Time Equities, Inc., U.S. Department of State's Bureau of Educational and Cultural Affairs, U.S. Regional Arts Organizations.

With support from the Doris Duke Charitable Foundation, LMCC is also partnering with Arup toward three primary goals: achieving operational sustainability, developing a framework for sustainable event management for the River To River Festival, and positively influencing public practice in the arts.

The River To River Festival is presented by lead partner Lower Manhattan Cultural Council in collaboration with Founding Partners Arts Brookfield, Battery Park City Authority, and The Seaport.



Lower Manhattan Cultural Council (LMCC) - a 501(c)(3) nonprofit, has been a leading voice for arts and culture Downtown and throughout New York City for nearly 40 years, producing cultural events and promoting the arts through grants, services, advocacy, and cultural development programs.

arts>Brookfield

Arts Brookfield - Since 1988, more than 3.5 million people have enjoyed over 2,500 cultural events presented by Arts Brookfield at the World Financial Center. An initiative of Brookfield Office Properties, Arts Brookfield is one of the largest free, privately funded arts programs on the east coast.



The Hugh L. Carey Battery Park City Authority - is a New York State public benefit corporation whose mission is to create and maintain a balanced community of commercial, residential, retail, and park space within its designated 92-acre site on the Lower West Side of Manhattan.



The Seaport - This unique venue continues its reputation for introducing some of the coolest new artists, as well as a great line-up of national and international recording artists. Located at the tip of Manhattan, South Street Seaport is a slice of timeless New York.

The River To River Festival 2012 features work from a number of additional partners:

2012 Presenting Partners

The Joyce Theater
Trinity Wall Street

The Michael Schimmel Center
for the Arts at Pace University

2012 Program Partners

Beth Morrison Projects
Children's Museum of the Arts
Come Out & Play
Cooper-Hewitt,
National Design Museum
The Drawing Center
Harvestworks
Improv Everywhere

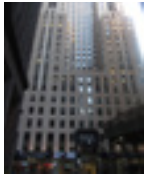
Make Music New York
The National Book Foundation
The New York
Academy of Sciences
Poets House
South Street Seaport Museum
Storm King Art Center
Tribeca Film

River To River Festival Location Map



Locations subject to change, please visit RiverToRiverNYC.com for up-to-date information

Locations



1 80 Broad Street 21st floor

is located in the Financial District at the northwest corner of Broad and Stone Streets.



2 @Seaport

located at 210 Front Street, is a versatile cultural space in the heart of the South Street Seaport.



3 Battery Park

is located at the southernmost tip of Manhattan and offers sweeping vistas of New York Harbor.



4 Broad and Wall Street

is located in the heart of the Financial District.



5 Castle Clinton

in Battery Park serves as the ticketing office for ferries to the Statue of Liberty and Ellis Island.



6 Coleman Oval Park

is part of Coleman Square Playground on the border of Chinatown and the Lower East Side.



7 Good Companions Senior Center

is located at 334 Madison Street in the Lower East Side.



8 Elevated Acre

is located at 55 Water Street between Old Slip and Broad Street.



9 Governors Island

is open Saturdays, Sundays, and holiday Mondays. Ferries run from Manhattan and Brooklyn.



9 Building 110

LMCC's Arts Center at Governors Island is located on the northern shore of Governors Island.



9 Nolan Park

is a bucolic, four acre manicured green on Governors Island.



9 Fort Jay

is located in the heart of Governors Island.



9 Parade Ground

is a five-minute walk from the Manhattan and Brooklyn ferry landings on Governors Island.



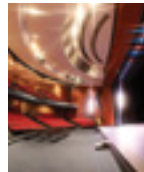
10 Mannhatta Park

is located between Front and South Streets at the east end of Wall Street.



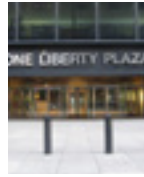
11 Melville Gallery

is located on cobblestoned Water Street, within the South Street Seaport District.



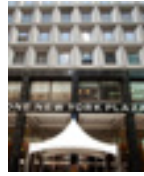
12 Michael Schimmel Center for the Arts

at Pace University's Downtown campus is located at 3 Spruce Street.



13 One Liberty Plaza

is located in the heart of Lower Manhattan at Liberty Street and Broadway.



14 One New York Plaza

is located at the intersection of Water and Whitehall Streets.



15 Pier 15

is located at the end of John Street in Lower Manhattan.



16 Pier 16, The Seaport

is located in the South Street Seaport.



17 Pier 17, The Seaport

is located in the South Street Seaport.



18 Poets House

is located at 10 River Terrace in Battery Park City.



19 Rockefeller Park

is located at the north end of Battery Park City at the corner of River Terrace and Warren Street.



20 Smyth Tribeca

is at 85 West Broadway between Warren and Chambers Streets in the heart of Tribeca.



21 South Street Seaport Museum

is located at 12 Fulton Street in the historic South Street Seaport.



22 St. Paul's Chapel

is located at Broadway and Fulton Street.



23 Theatre Alley

is located on a historic cobblestone street located between Nassau and Centre Streets.



24 Wall Street Plaza

is located at 88 Pine Street at Water Street.



25 Whitehall Terminal

is located in the South Ferry area of Lower Manhattan and is used by the Staten Island Ferry.



26 World Financial Center Plaza

is located on the Hudson River just outside the World Financial Center at 220 Vesey St.



27 World Financial Center Winter Garden

is located at 220 Vesey Street.

week 1

sun

mon

tues

wed

thurs

fri

sat

June

17

18

19

20

21

22

23

Bang on a Can Marathon
WFC Winter Garden
12pm

Transforming Function
Building 110, Governors Island
12pm

The Flock House Project
Battery Park
12pm

Stella Days
Elevated Acre
8pm

Edmar Castaneda Trio
WFC Plaza
5:30pm

Joseph Mitchell's Harbor
Melville Gallery
6:30pm

Philip Glass Ensemble
with Face the Music
Rockefeller Park
7pm

Tales: The Narrative Image
One NY Plaza
7am-7pm

KUN-64 Toy Pianos
Pier 15
4:30pm

Edmar Castaneda
One NY Plaza
5pm

Made in New York
South Street Seaport Museum
6:30pm

Eddie Palmieri
Rockefeller Park
7pm

Three Sisters
Good Companions Senior Center
1:30pm

Le Grand Continental
Pier 16 & 17, The Seaport
7pm

The Miracles Club
Pier 17, The Seaport
8pm

Making & Decorating Model Boats
Pier 16, The Seaport
10:30am

Trisha Brown Dance Company
Building 110, Governors Island
1pm

Draw Now!: Stretch It Out!
Fort Jay, Governors Island
2pm

Trisha Brown Dance Company
Building 110, Governors Island
3pm

Le Grand Continental
Pier 16 & 17, The Seaport
7pm

Chico Mann, DJ Set
Pier 17, The Seaport
8pm



Le Grand Continental
Pier 16 & 17, The Seaport
22 & 23 June 7pm
24 June 2pm

Le Grand Continental brings together 200 New Yorkers to perform a blend of line dancing and contemporary dance by choreographer Sylvain Emaré. **Presented by River To River Festival and The Joyce Theater.**

Each performance will be followed by a DJ dance party on Pier 17:
22 June - The Miracles Club
23 June - Chico Mann
24 June - Body Language



Eddie Palmieri
Rockefeller Park
21 June 7pm

Appearing with his Afro-Caribbean Jazz Octet, Eddie Palmieri will delight audiences in Rockefeller Park with his charismatic power, bold innovative drive, and historic compositions. **Presented by Battery Park City Authority.**

Bang on a Can Marathon
WFC Winter Garden
17 June
12pm-12am

A 12-hour super-mix of boundary-busting music from around the globe, 25 Years of the Bang on a Can Marathon features rare performances by pioneering musicians. **Presented by River To River Festival, Arts Brookfield and Bang on a Can.**



Stella Days (2012)
Presented in association with Tribeca Film
18 June 8pm
Elevated Acre at 55 Water Street

Starring Martin Sheen, Stella Days portrays the dramatic struggle between a man and his conscience. Set in a small town cinema in rural Ireland, the film encapsulates the dilemma of Ireland in the mid-1950's.



Spotlight Philip Glass Ensemble



photo by: Fernando Aceves, cover photo by: Steve Pyke

“An unprecedented free retrospective performance by the Philip Glass Ensemble in Rockefeller Park in celebration of the composer’s 75th birthday.”
The New York Times

Legacy and Lineage

Much of the music programming has been shaped around the idea of legacy and lineage, bringing together iconic or well-established artists who have created a significant body of work, and presenting them in juxtaposition to the emerging and mid-career artists that they have influenced.

The Philip Glass Ensemble gives a retrospective concert in Rockefeller Park, its only free New York City performance during a season celebrating the composer’s 75th birthday; musical child prodigies Face the Music will open the show, honoring the composer by performing his seminal piece *Glassworks*. Bang on a Can celebrates 25 years with their annual Bang on a Can Marathon and Alarm Will Sound celebrates the John Cage centennial with a newly re-imagined staging of his epic *Song Books*. The Festival also includes concerts featuring the work of a new generation of composers influenced by Glass including Nico Muhly at St. Paul’s Chapel, Paola Prestini at The Michael Schimmel Center for the Arts at Pace University and Ecstatic™ Summer at the World Financial Center.

week 2

sun

mon

tues

wed

thurs

fri

sat

June

24

25

26

27

28

29

30

Art Inspired by the Sea
Pier 16,
The Seaport
10:30am

Trisha Brown Dance Co.
Building 110,
Governors
Island
1pm

Mannahatta/Manhattan
South Street
Seaport
Museum
1pm

Le Grand Continental
Pier 16 & 17,
The Seaport
2pm

Draw Now!: Drawing Circle
Fort Jay,
Governors
Island
2pm

Body Language, DJ Set
Pier 17,
The Seaport
2:30pm

Artists Respond: Mark di Suvero
Building 110,
Governors
Island
3pm

Trisha Brown Dance Co.
Building 110,
Governors
Island
3pm

Electric Kulintang and Manado Choir
St. Paul's
Chapel
7:30pm

Underneath Where We Are
Wall Street
Plaza
1pm

Oceanic Verses
Michael
Schimmel
Center for the
Arts at Pace
University
7:30pm

Collaborator
Elevated Acre
8pm

Underneath Where We Are
Wall Street
Plaza
1pm

Angelo M Trio
WFC Plaza
5:30pm

The Science of Local Food
Melville
Gallery
6:30pm

Poets House Poetic City with Suzanne Vega & Gabriel Kahane
Rockefeller
Park
7pm

Twelfth Night
Castle Clinton
7pm

Act Without Words II
Theatre Alley
9pm

Oceanic Verses
Michael
Schimmel Center
for the Arts at
Pace University
25 June 7:30pm

This full-length multimedia opera by acclaimed composer Paola Prestini is set against the backdrop of the Mediterranean Sea, where two ghosts reenact their courtship, a sailor searches for lost songs, and a scholar discovers a common past. Produced by Beth Morrison Projects and commissioned by VisionIntoArt. **Presented by River To River Festival with Michael Schimmel Center for the Arts at Pace University.**

Emily Elbert
One Liberty
Plaza
12:30pm

Underneath Where We Are
Wall Street
Plaza
1pm

Brooklyn Bridge Walking Tour
South Street
Seaport
Museum
1pm

Twelfth Night
Castle Clinton
7pm

Third World
Rockefeller
Park
7pm

Showcase
Smyth Tribeca
7pm

Act Without Words II
Theatre Alley
9pm

Angelo M Trio
One NY Plaza
12:30pm

SHOW
Broad & Wall
Street
1pm

Source of Uncertainty I
@Seaport
3pm

Folk Art in Four Directions
South Street
Seaport
Museum
6:30pm

Twelfth Night
Castle Clinton
7pm

Showcase
Smyth Tribeca
7pm

Act Without Words II
Theatre Alley
9pm

SHOW
Broad & Wall
Street
1pm

Twelfth Night
Castle Clinton
7pm

Showcase
Smyth Tribeca
7pm

Veronica Falls with The People's Temple
Pier 17,
The Seaport
7pm

Act Without Words II
Theatre Alley
9pm

Veronica Falls with The People's Temple
Pier 17,
The Seaport
29 June 7pm

London four-piece Veronica Falls mixes sweetness and light with dissonance and darkness, adding in the sinister sides of 50s and 60s love songs to make visceral pop music with an edge and a beat.

Third World
Rockefeller Park
27 June 7pm

Third World, one of the longest-lived reggae bands, will mix in elements of R&B, funk, and rock to produce upbeat music at sunset by the Hudson. **Presented by Battery Park City Authority.**

Keeping the Harbor Safe
Pier 16,
The Seaport
10:30am

Trisha Brown Dance Co.
Bldg 110, Gov. Is.
1pm

Annual Showcase Opening Celebration
Poets House
1pm

Brooklyn Bridge Walking Tour
Seaport Museum
1pm

Draw Now!: Windfall Alphabet
Ft. Jay, Gov. Is.
2pm

Trisha Brown Dance Co.
Bldg 110, Gov. Is.
3pm

SHOW
Broad & Wall St.
5pm

Feel...Form
Whitehall Term.
6pm

Twelfth Night
Castle Clinton
7pm

Showcase
Smyth Tribeca
7pm

Ecstatic™ Summer: Roomful of Teeth with Merrill Garbus & William Brittle and Judd Greenstein's The Yehudim
WFC Plaza
7pm

Electric Midwife
Pier 15
7:30pm

Showcase
Smyth Tribeca
9pm



Sat 30 June

Make a day of it!



10:30am

Keeping the Harbor Safe Pier 16, The Seaport

1

The NYPD's job is to keep everybody safe. Learn about the NYPD Harbor Unit and the boats that they use. Afterward, make your own police boat model. This is a great event for the family!



Enjoy brunch at one of the many cafes and restaurants at the Seaport. Check out more dining options on the Downtown Alliance NYC app, available at RiverToRiverNYC.com.



1pm

Brooklyn Bridge Walking Tour South Street Seaport Museum

2

Join us for a walking exploration and discussion of the history of construction of the Brooklyn Bridge.

Take a free ferry to Governors Island! For roundtrip ferry schedules departing from both Manhattan & Brooklyn, visit govisland.com.



3pm

Trisha Brown Dance Company Governors Island

The Company is in residence at Building 110: LMCC's Arts Center at Governors Island for three weeks in June leading up to performances of *Astral Converted* at the Park Avenue Armory.

3



6pm

FEEL...FORM by luciana achugar Whitehall Terminal, South Ferry

4

FEEL...FORM is a dance meditation on the relationship between aesthetics and ideology. For River To River 2012, Bessie Award winning choreographer luciana achugar revisits the work in a site-based context.



7pm

Ecstatic™ Summer: Roomful of Teeth with Merrill Garbus & William Brittle and Judd Greenstein's The Yehudim WFC Plaza

5

Vocal octet Roomful of Teeth, performs new composition by Merrill Garbus of TUnE-yArDs and composer William Brittle. Judd Greenstein's The Yehudim opens the concert.
Presented by River To River Festival and Arts Brookfield.

Enjoy the many restaurants at World Financial Center and Battery Park City. Check out more dining options on the Downtown Alliance NYC app, available at RiverToRiverNYC.com.

week 3

sun

mon

tues

wed

thurs

fri

sat

July

01

02

03

04

05

06

07

Fraunces Tavern: NYC Landscapes
Pier 16, The Seaport
10:30am

The Flock House Project
Coleman Oval Park
12pm

Trisha Brown Dance Co.
Building 110, Gov. Island
1pm

Juliana F. May
Fort Jay, Gov. Island
2pm

Draw Now!: Red, Yellow, Blue
Fort Jay, Gov. Island
2pm

Trisha Brown Dance Co.
Building 110, Gov. Island
3pm

Artists Respond: Mark di Suvero
Building 110, Gov. Island
3pm

SHOW
Broad & Wall Street
5pm

FEEL...FORM
Whitehall Term, South Ferry
6pm

Twelfth Night
Castle Clinton
7pm

Electric Midwife
Pier 15
7:30pm

Composer Portrait: Nico Muhly
St. Paul's Chapel
8:30pm

Folk Art in Four Directions
South Street Seaport Museum
1pm

FEEL...FORM
Whitehall Terminal South Ferry
1pm

Inverted Sky
Rockefeller Park
4pm

The Bridge to Broadway
Rockefeller Park
7pm

Electric Midwife
Pier 15
7:30pm

The Runway
Elevated Acre
8pm

FEEL...FORM
Whitehall Terminal South Ferry
1pm

Twelfth Night
Castle Clinton
7pm

Arieb Azhar
Michael Schimmel Center for the Arts at Pace University
7:30pm



Arieb Azhar
Michael Schimmel Center for the Arts at Pace University
03 July 7:30pm

Pakistani Sufi and folk music artist Arieb Azhar leads a quartet of musicians in an eclectic mix of urban and folk-based songs grounded in Sufi and other humanist poetics from across Eurasia. Azhar pays tribute to Irish balladeers, and Croatian gypsies.

Megan Burt & The Cure For Love
One NY Plaza
12:30pm

Twelfth Night
Castle Clinton
7pm

Electric Midwife
Pier 15
30 June – 02 July
7:30pm

Electric Midwife, by choreographer and multiple BESSIE award-winner Beth Gill, is a performance of symmetry. Six women form two trios that mirror each other's movements, creating an intricately patterned tapestry.



Patrick Watson with Loney Dear
Pier 17, The Seaport
06 July 7pm

A chance to hear from Patrick Watson's newest album *Adventures In Your Own Backyard*, which was made at home after a grueling five-year run that saw Watson and his band tour the world. Plus Swedish sensations Loney Dear.

History & Archaeology Walking Tour
South Street Seaport Museum
1pm

Patrick Watson with Loney Dear
Pier 17, The Seaport
7pm

Twelfth Night
Castle Clinton
7pm

Basket-weaving
Pier 16, The Seaport
10:30am

Graphic Design – Now in Production
Building 110, Governors Island
11am

History & Archaeology Walking Tour
South Street Seaport Museum
1pm

We're Floating
Poets House
4pm

Twelfth Night
Castle Clinton
7pm

Source of Uncertainty II
Michael Schimmel Center for the Arts at Pace University
7:30pm

Sun 01 July

Make an outing of it!



12pm

Flock House Project by Mary Mattingly Coleman Oval Park

1

Former LMCC resident artist Mary Mattingly brings The Flock House Project to Lower Manhattan. Built collaboratively upon reclaimed, redesigned, and rethought materials within a gift culture, Flock House sets out to inspire reinvention of mobile structures in a time when growing urban populations are faced with imminent environmental, political, and economic instability.



Pack a picnic and head to Governors Island. For ferry schedules visit govisland.com.



2pm

Draw Now!: Red, Yellow, Blue Fort Jay, Governors Island

2

Red, Yellow, Blue is a kinetic installation featuring a cast of 12 dancers and 4 visual artists that use moving bodies to create visual design in 3-dimensional space.

3pm

Artists Respond: Mark di Suvero Building 110, Governors Island

3

Join Ranger Connie O'Nassis (alter ego of artist Lillian Gerson) for an awe-inspiring trip around historic Nooten Eyelandt focusing on the works of Mark di Suvero.



Head back to Manhattan. For ferry schedules visit govisland.com.

5pm

SHOW by Maria Hassabi Broad & Wall Street

4

SHOW premiered in November 2011 at the Kitchen. Now for the 2012 River To River Festival, Hassabi extends SHOW's exploration of audience and performer further by staging it in a public space. Existing beyond the frame of the theater, new parameters of performance will emerge as SHOW is set within the conditions of the open air, pervious to passersby and other variants.



Have dinner at one of the many Lower Manhattan restaurants. Check out more dining options on the Downtown Alliance NYC app, available at: RiverToRiverNYC.com.

8:30pm

Composer Portrait: The Choral Music of Nico Muhly St. Paul's Chapel

5

Part of the Sundays at St. Paul's series, this unique presentation of choral works showcases a world premiere composition by Nico Muhly commissioned by the River To River Festival, Trinity Wall Street, and Beth Morrison Projects as well as Muhly's other choral works and a selection of Renaissance choral works.



Spotlight Giving Dance An Extended Life

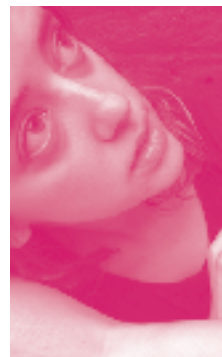
More than just music, the River To River Festival offers the opportunity to see dance works re-imagined for a new space, giving them an extended life, and in some cases allowing the public to observe or participate in the creative process.

This framework not only encourages the artist to deepen their original exploration, it also allows the artist to translate the work to the site and make it available to new audiences. Throughout the 2012 Festival, audiences will have the opportunity to experience site-based works by luciana achugar, Wally Cardona, Beth Gill, Maria Hassabi, Tara O'Con, and Tere O'Connor all around Lower Manhattan.



“Finally New York gets a contemporary dance festival.”

The New York Times



week 4

mon

tues

wed

thurs

fri

sat

sun

July

09

10

11

12

13

14

15

sun

08

Knot Tying Workshop
Pier 16,
The Seaport
10:30am

**Graphic Design—
Now in
Production**
Building 110,
Governors
Island
11am

**Artists
Respond:
Mark di
Suvero**
Building 110,
Governors
Island
3pm

**The Art of
Letterpress:
Workshop**
South Street
Seaport
Museum
3pm

**Twelfth
Night**
Castle Clinton
7pm

**The Saints
Tour**
Meeting Point
TBD
7pm

**Blake
Carrington,
Taylor
Deupree,
and Daniel
Iglesia**
St. Paul's
Chapel
7:30pm

**Tere
O'Connor
Dance**
Mannahatta
Park
2pm

**The Saints
Tour**
TBD
7pm

Side by Side
Elevated Acre
8pm

**Tere
O'Connor
Dance**
Mannahatta
Park
2pm

**Locos Por
Juana**
WFC Plaza
5:30pm

**Twelfth
Night**
Castle Clinton
7pm

La India
Rockefeller
Park
7pm

**The Saints
Tour**
TBD
7pm

Ian Link
One Liberty
Plaza
12:30pm
**Architectural
Walking Tour**
South Street
Seaport
Museum
1pm

**Tere O'Connor
Dance**
Mannahatta
Park
2pm

Twelfth Night
Castle Clinton
7pm

**The Saints
Tour**
TBD
7pm

**Missy
Mazzoli &
Victoire with
Matt Mehlan
and Skeletons**
Michael
Schimmel
Center for the
Arts at Pace
7:30pm

**Dana Leong
Trio**
One NY Plaza
12:30pm

**Tere
O'Connor
Dance**
Mannahatta
Park
2pm

**The Setup:
Junko Fisher**
80 Broad St.
4pm

**Occupy
Wall Street:
Camera &
Subject**
South Street
Seaport
Museum
6:30pm

**Twelfth
Night**
Castle Clinton
7pm

**The Saints
Tour**
TBD
7pm

**John
Ashbery**
Poets House
7pm

**George
Clinton &
Parliament
Funkadelic**
Rockefeller
Park
7pm

Tap It Out
WFC Plaza
12, 1 & 2pm

**The Setup:
Junko Fisher**
80 Broad St.
4pm

**Twelfth
Night**
Castle Clinton
7pm

**Eleanor
Friedberger
with
Ex Cops**
Pier 17,
The Seaport
7pm

**Come Out
& Play
After Dark**
@Seaport
9pm

**Ecstatic™
Summer:
A Far Cry
Orchestra
with
Oneohtrix
Point Never
& David
Lang**
WFC Winter
Garden
14 July 7pm
**Presented by
River To River
Festival & Arts
Brookfield.**

**Ink, Pull, Roll:
Printmaking**
South Street
Seaport
Museum
10:30am

**Tamimiami
Pixilation
Project**
Governors
Island
11am

**Come Out
& Play
Field Day**
Governors
Island
12pm

**Building 110:
Open House**
Governors
Island
12pm

**Architectural
Walking Tour**
South Street
Seaport
Museum
1pm

**The Setup:
Junko Fisher**
80 Broad St.
4pm

**We're
Floating**
Poets House
4pm

Twelfth Night
Castle Clinton
7pm

**Ecstatic™
Summer:
A Far Cry
Orchestra
w/ Oneohtrix
Point Never
& David Lang**
WFC Winter
Garden
7pm

**Creating
Sailor's
Valentines**
South Street
Seaport
Museum
10:30am

**The MP3
Experiment**
Governors
Island
12pm

**Building 110:
Open House**
Governors
Island
12pm

**Artists
Respond:
Mark di
Suvero**
Building 110,
Gov. Island
3pm

**CHERYL:
On the
Waterfront**
Pier 16,
The Seaport
5pm

**Twelfth
Night**
Castle Clinton
7pm

**Alarm Will
Sound**
Michael
Schimmel
Center for the
Arts at Pace
University
7:30pm



George Clinton & Parliament Funkadelic
Rockefeller Park
12 July 7pm

George Clinton & Parliament Funkadelic are one of the most influential names in funk music. Epic in both sound and size, this collective of wildly talented musicians revolutionized soul music in the 70s and have been playing together for over 50 years. **Presented by Battery Park City Authority.**



**Missy Mazzoli & Victoire
with Matt Mehlan & Skeletons**
Michael Schimmel
Center
11 July 7:30pm

This musical portrait of "postclassical queen bee" composer Missy Mazzoli, will feature her on keyboard fronting her internationally beloved ensemble Victoire performing songs with Matt Mehlan with his band Skeletons.



Sun 15 July

Make a date of it!

Head back to Manhattan. For ferry schedules visit govisland.com.



10:30am

Creating Sailor's Valentines South Street Seaport Museum

1

In the 1800s, sailor's valentines were often made by sailors' loved ones while they were away at sea. Using colorful shells and other materials, children, and families will create their own valentine in the style of the 19th century designs.



Enjoy brunch at one of the many cafes and restaurants at the Seaport. Check out more dining options on the Downtown Alliance NYC app, available at: RiverToRiverNYC.com.



Take a free ferry to Governors Island! For roundtrip ferry schedules departing from both Manhattan & Brooklyn, visit govisland.com.



3pm

The MP3 Experiment Governors Island

2

The MP3 Experiment is a participatory public event created by New York comedy group Improv Everywhere. Participants download an mp3 file, head out to the same public location, and press play simultaneously. Full instructions, including mp3 download link, will be posted on improveverywhere.com.



12-5pm

Building 110: Open House LMCC's Arts Center at Governors Island

3

Join us during Open House, when we celebrate the culmination of the 2012 Swing Space Spring Session featuring 20 visual artists-in-residence as well as performing artists-in-residence who will present works-in-progress.

5pm

CHERYL: On the Waterfront Pier 16, The Seaport

Art Party Impresarios CHERYL bring their signature high-concept hi-jinks – DJs and dancing, characters in costume, hands-on art-making activities for grown-ups and more, Dockworkers, priests, blonde ladies, and fishmongers populate the pier and The Ambrose for a waterfront dance party.



After you've finished dancing, grab a quick bite to eat in Lower Manhattan. Check out more dining options on the Downtown Alliance NYC app, available at: RiverToRiverNYC.com.



7:30pm

Alarm Will Sound Michael Schimmel Center for the Arts at Pace University

5

Alarm Will Sound performs John Cage's Song Books. The members of the ensemble did a production of Song Books as students years before starting Alarm Will Sound and much of what they've accomplished since then in innovating the concert-hall experience goes right back to the excitement they felt during that first Song Books. U.S. Premiere, Co-commissioned by River To River and The Holland Festival.

We hope you've enjoyed the 2012 River To River Festival. See you next year!

Week 1**17 sun**

Bang on a Can Marathon
WFC Winter Garden 12pm

Transforming Function
Building 110, Governors Island
12pm

The Flock House Project
Battery Park 12pm

18 mon
Stella Days
Elevated Acre 8pm

19 tues
Edmar Castaneda Trio
WFC Plaza 5:30pm

Joseph Mitchell's Harbor
Melville Gallery 6:30pm

20 wed
Philip Glass Ensemble
with Face the Music
Rockefeller Park 7pm

21 thurs
Tales: The Narrative Image
One NY Plaza 7am

KUN-64 Toy Pianos
Pier 15 4:30pm

Edmar Castaneda
One NY Plaza 5pm

Made in New York
South Street Seaport Museum
6:30pm

Eddie Palmieri
Rockefeller Park 7pm

22 fri
Three Sisters
Good Companions Senior Center
1:30pm

Le Grand Continental
Pier 16 & 17, The Seaport 7pm

The Miracles Club
Pier 17, The Seaport 8pm

23 sat
Making & Decorating
Model Boats
Pier 16, The Seaport 10:30am

Trisha Brown Dance Company
Building 110, Governors Island 1pm

Draw Now!: Stretch It Out!
Fort Jay, Governors Island 2pm

Trisha Brown Dance Company
Building 110, Governors Island
3pm

Le Grand Continental
Pier 16 & 17, The Seaport 7pm

Chico Mann, DJ Set
Pier 17, The Seaport 8pm

Week 2**24 sun**

Art Inspired by the Sea
Pier 16, The Seaport 10:30am

Trisha Brown Dance Company
Building 110, Governors Island 1pm

Mannahatta/Manhattan
South Street Seaport Museum
1pm

Le Grand Continental
Pier 16 & 17, The Seaport 2pm

Draw Now!: Drawing Circle
Fort Jay, Governors Island 2pm

Body Language, DJ Set
Pier 17, The Seaport 2:30pm

Artists Respond: Mark di Suvero
Building 110, Governors Island 3pm

Trisha Brown Dance Company
Building 110, Governors Island 3pm

Electric Kulintang & Manado Choir
St. Paul's Chapel 7:30pm

25 mon
Underneath Where We Are
Wall Street Plaza 1pm

Oceanic Verses
Michael Schimmel Center for the
Arts at Pace University 7:30pm

Collaborator
Elevated Acre 8pm

26 tues
Underneath Where We Are
Wall Street Plaza 1pm

Angelo M Trio
WFC Plaza 5:30pm

The Science of Local Food
Melville Gallery 6:30pm

Poets House Poetic City with
Suzanne Vega & Gabriel Kahane
Rockefeller Park 7pm

Twelfth Night
Castle Clinton 7pm

Act Without Words II
Theatre Alley 9pm

27 wed
Emily Elbert
One Liberty Plaza 12:30pm

Underneath Where We Are
Wall Street Plaza 1pm

Brooklyn Bridge Walking Tour
South Street Seaport Museum 1pm

Twelfth Night
Castle Clinton 7pm

Third World
Rockefeller Park 7pm

Showcase
Smyth Tribeca 7pm

Act Without Words III
Theatre Alley 9pm

28 thurs
Angelo M Trio
One NY Plaza 12:30pm

SHOW
Broad & Wall Street 1pm

Source of Uncertainty I
@Seaport 3pm
Folk Art in Four Directions
South Street Seaport Museum
6:30pm

Twelfth Night
Castle Clinton 7pm

Showcase
Smyth Tribeca 7pm

Act Without Words II
Theatre Alley 9pm

29 fri
SHOW
Broad & Wall Street 1pm

Twelfth Night
Castle Clinton 7pm

Showcase
Smyth Tribeca 7pm

Veronica Falls
with The People's Temple
Pier 17, The Seaport 7pm

Act Without Words II
Theatre Alley 9pm

30 sat
Keeping the Harbor Safe
Pier 16, The Seaport 10:30am

Trisha Brown Dance Company
Building 110, Governors Island 1pm

Poets House Annual Showcase
Opening Celebration
Poets House 1pm

Brooklyn Bridge Walking Tour
South Street Seaport Museum
1pm

Draw Now!: Windfall Alphabet
Fort Jay, Governors Island 2pm

Trisha Brown Dance Company
Building 110, Governors Island
3pm

SHOW
Broad & Wall Street 5pm

FEEL...FORM
Whitehall Terminal South Ferry
6pm

Twelfth Night
Castle Clinton 7pm

Showcase
Smyth Tribeca 7pm

Ecstatic™ Summer: Roomful of
Teeth with Merrill Garbus &
William Brittelle and
Judd Greenstein's The Yehudim
WFC Plaza 7pm

Electric Midwife
Pier 15 7:30pm

Showcase
Smyth Tribeca 9pm

Week 3

01 sun
Fraunces Tavern:
NYC Landscapes
Pier 16, The Seaport 10:30am

The Flock House Project
Coleman Oval Park 12pm

Trisha Brown Dance Company
Building 110, Governors Island 1pm

Juliana F. May
Fort Jay, Governors Island 2pm

Draw Now!: Red, Yellow, Blue
Fort Jay, Governors Island 2pm

Trisha Brown Dance Company
Building 110, Governors Island
3pm

Artists Respond: Mark di Suvero
Building 110, Governors Island
3pm

SHOW
Broad & Wall Street 5pm

FEEL...FORM
Whitehall Terminal South Ferry
6pm

Twelfth Night
Castle Clinton 7pm

Electric Midwife
Pier 15 7:30pm

Composer Portrait: Nico Muhly
St. Paul's Chapel 8:30pm

02 mon
Folk Art in Four Directions
South Street Seaport Museum
1pm

FEEL...FORM
Whitehall Terminal South Ferry
1pm

Inverted Sky
Rockefeller Park 4pm

The Bridge to Broadway
Rockefeller Park 7pm

Electric Midwife
Pier 15 7:30pm

The Runway
Elevated Acre 8:00pm

03 tues
FEEL...FORM
Whitehall Terminal South Ferry
1pm

Twelfth Night
Castle Clinton 7pm

Arieb Azhar
Michael Schimmel Center for the
Arts at Pace University 7:30pm

05 thurs
Megan Burt & The Cure For Love
One NY Plaza 12:30pm

Twelfth Night
Castle Clinton 7pm

06 fri
History & Archaeology
Walking Tour
South Street Seaport Museum
1pm

Patrick Watson with Loney Dear
Pier 17, The Seaport 7pm

Twelfth Night
Castle Clinton 7pm

07 sat
Basketweaving
Pier 16, The Seaport 10:30am

Graphic Design—Now in
Production
Building 110, Governors Island 11am

History & Archaeology
Walking Tour
South Street Seaport Museum
1pm

We're Floating
Poets House 4pm

Twelfth Night
Castle Clinton 7pm

Source of Uncertainty II
Michael Schimmel Center for the
Arts at Pace University 7:30pm

Week 4

08 sun

Knot Tying Workshop

Pier 16, The Seaport 10:30am

Graphic Design—Now in Production

Building 110, Governors Island 11am

Artists Respond: Mark di Suvero

Building 110, Governors Island 3pm

The Art of Letterpress: Workshop

South Street Seaport Museum 3pm

Twelfth Night

Castle Clinton 7pm

The Saints Tour

TBD 7pm

Blake Carrington, Taylor Deupree, and Daniel Iglesia

St. Paul's Chapel 7:30pm

09 mon

Tere O'Connor Dance

Mannahatta Park 2pm

The Saints Tour

TBD 7pm

Side by Side

Elevated Acre 8pm

10 tues

Tere O'Connor Dance

Mannahatta Park 2pm

Locos Por Juana

WFC Plaza 5:30pm

Twelfth Night

Castle Clinton 7pm

La India

Rockefeller Park 7pm

The Saints Tour

TBD 7pm

11 wed

Ian Link

One Liberty Plaza 12:30pm

Architectural Walking Tour

South Street Seaport Museum 1pm

Tere O'Connor Dance

Mannahatta Park 2pm

Twelfth Night

Castle Clinton 7pm

The Saints Tour

TBD 7pm

Missy Mazzoli & Victoire with Matt Mehlan and Skeleton

Michael Schimmel Center for the Arts at Pace University 7:30pm

12 thurs

Dana Leong Trio

One NY Plaza 12:30pm

Tere O'Connor Dance

Mannahatta Park 2pm

The Setup: Junko Fisher

80 Broad St. 4pm

Occupy Wall Street: Camera & Subject

South Street Seaport Museum 6:30pm

Twelfth Night

Castle Clinton 7pm

The Saints Tour

TBD 7pm

John Ashbery

Poets House 7pm

George Clinton & Parliament Funkadelic

Rockefeller Park 7pm

13 fri

Tap it Out

WFC Plaza 12, 1 & 2pm

The Setup: Junko Fisher

80 Broad St. 4pm

Twelfth Night

Castle Clinton 7pm

Eleanor Friedberger with Ex Cops

Pier 17, The Seaport 7pm

Come Out & Play After Dark

@Seaport 9pm

14 sat

Ink, Pull, Roll: Printmaking

South Street Seaport Museum 10:30am

Tamimiami Pixilation Project

Governors Island 11am

Come Out & Play Field Day

Governors Island 12pm

Building 110: Open House

Governors Island 12pm

Architectural Walking Tour

South Street Seaport Museum 1pm

The Setup: Junko Fisher

80 Broad St. 4pm

We're Floating

Poets House 4pm

Twelfth Night

Castle Clinton 7pm

Ecstatic™ Summer: A Far Cry Orchestra with Oneohtrix Point Never & David Lang

WFC Winter Garden 7pm

15 sun

Creating Sailor's Valentines

South Street Seaport Museum 10:30am

The MP3 Experiment

Governors Island 12pm

Building 110: Open House

Governors Island 12pm

Artists Respond: Mark di Suvero

Building 110, Governors Island 3pm

CHERYL: On the Waterfront

Pier 16, The Seaport 5pm

Twelfth Night

Castle Clinton 7pm

Alarm Will Sound

Michael Schimmel Center for the Arts at Pace University 7:30pm



All of us at Lower Manhattan Cultural Council (LMCC) — the lead producer of the River To River® Festival — believe that arts and culture play a crucial role in the vitality of our communities. For nearly 40 years, LMCC has spurred cultural development in Lower Manhattan through unique arts initiatives.

As a supporter and Friend of LMCC, you can be part of our efforts to infuse Downtown with arts and culture, making it a more desirable place to live, work, learn, and play. Thank you for helping LMCC make art happen here!

When you become a Friend of LMCC, you:

- Gain access to premier River To River events, open studio previews, and exclusive art receptions that provide unique opportunities to meet artists, cultural leaders, and Downtown stakeholders;
- Contribute to free arts programming Downtown — including the Festival — which reaches more than 120,000 residents, workers, and visitors, and support more than 1,000 artists and 550 small arts groups from across New York City who work Downtown and throughout the borough of Manhattan;
- Participate in programs and forums that address sustainability practices in the arts, the development of Lower Manhattan's cultural identity, and the future of Downtown.

Additional Benefits of Becoming a Friend of LMCC

\$25 - \$99	LMCC tote bag
\$100 - \$249	<i>The above benefit, plus...</i> Invitation for two to the R2R Bash, the launch party for the 2012 River To River Festival
\$250 - \$499	<i>All of the above benefits, plus...</i> Invitation for two to 2 River To River VIP events Invitation for two to 3 LMCC special events
\$500 - \$999	<i>All of the above benefits, plus...</i> Invitation for two to the River To River 2012 and 2013 Stakeholder Convenings Invitation for two to the River To River 2013 Conference
\$1,000+	<i>All of the above benefits, plus...</i> Advanced reservations for two to select River To River performances Advanced reservations for two to Access Restricted events (limited availability)

To make a donation, visit RiverToRiverNYC.com/donate

LMCC is a 501(c)(3) nonprofit tax-exempt organization. Please note that your contribution is tax deductible to the fullest extent allowed by law.



FOUNDING AND TITLE SPONSOR
AMERICAN EXPRESS

June 17–July 15

all around Lower Manhattan
2012 Season Festival Guide
RiverToRiverNYC.com
Free to All



music, dance,
theater, visual art,
film, experience

RiverToRiverNYC.com

follow us on  